

PLAISTOW & IFOLD PARISH COUNCIL NEWSLETTER



In This Issue:

*Neighbourhood Plan -
have your say*

*New Kelsey Hall Play
Area*

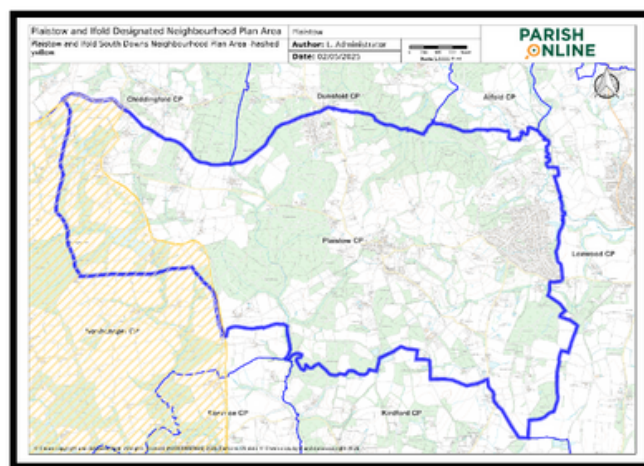
*Biodiversity
improvements*

Planning news

Summer Quiz

NEIGHBOURHOOD PLAN: HAVE YOUR SAY

The Plaistow and Ifold Neighbourhood Plan (NP) is being informally published this summer on the [Parish Council website](#), ahead of the formal Regulation 14 Consultation this autumn, which has to follow the expected adoption of the Chichester District Local Plan. Residents are encouraged to review and share feedback on this important document shaping the future of our parish.



What's in the Plan?

The NP sets out Policies and Aims across five key areas:

- **Housing** – Focuses on local housing needs, design, and density. It upholds the Ifold Settlement Boundary and reflects community feedback through the Plaistow and Ifold Design Guidelines.
- **Economy & Employment** – Supports new local businesses, protects existing jobs, and highlights the significance of village shops.
- **Community Assets & Recreation** – Safeguards heritage buildings and community facilities, encourages their recognition as Assets of Community Value, and lists important Non-Designated Heritage Assets (NDHAs).
- **Water** – Addresses flooding and foul drainage infrastructure aimed at ensuring development aligns with infrastructure constraints.
- **Environment & Community Connectivity** – Promotes biodiversity, green spaces, and improved pedestrian, cycle, and public transport links. It also tackles village congestion and encourages active travel.

(...contd.)

PLAISTOW & IFOLD PARISH COUNCIL CONTACT DETAILS

t. 01403 839300

e. clerk@plaistowandifold-pc.gov.uk

w. www.plaistowandifold-pc.gov.uk

NEIGHBOURHOOD PLAN

(continued from Page 1)

Have Your Say

Please send your feedback to the Parish Clerk at clerk@plaistowandifold-pc.gov.uk. All comments will remain anonymous and help refine the plan before formal consultation.

Timeline:

Summer 2025:
Informal publication and feedback

Autumn 2025:
Regulation 14 Consultation

Winter 2025:
CDC-led Regulation 16 Consultation

Early 2026:
Independent Examination and Referendum

Let’s shape the future
of our parish together!



Annual Parish Tea Party
For residents aged 80 and over
7th September 2025
Winterton Hall, Plaistow
3pm ‘til 5pm

Living in Plaistow, Ifold,
Shillinglee or Durfold Wood.
Plus One, welcome.



Please contact Sallie Baker if you would like to attend, need transport, can offer help beforehand or on the day, or if you know of anyone aged 80 plus, who might like to come.
salliebaker@btinternet.com 01403 871209

KELSEY HALL PLAY AREA

A Preschool Play Area has been installed at Kelsey Hall, Ifold. The facility was funded by the Community Infrastructure Levy received by the Parish Council from development in the Parish as well as a grant from Chichester District Council. The play area has passed its independent safety inspection, and the official opening was on 28th June. A bench and bin will be installed at the hall end of the play area and a further small bench adjacent to the road, shortly. The Parish Council hope the facility will provide a valuable community facility to younger families, carers and grandparents in Ifold and the rest of the Parish.



PARISH COUNCIL BIO-DIVERSITY WORKING GROUP

The Group set up a stand at the school fete to encourage the children to think about what they could do to support wildlife. Children were supported to place stickers on a map where they had seen wildlife such as foxes, rabbits and butterflies, and took wildflower seeds and leaflets away with ideas for increasing wildlife in their gardens.



The Group continues to look after the Ifold Community Garden trying to remove grass from the area designated for wildflowers at the same time as dodging the red ants! Buddleia and fox gloves have also been planted.



The Community Orchard planted in the winter looks to be flourishing. Thank you to the resident who has watered the trees for us!

PARISH LITTER PICK

Please join your neighbours and friends for the next Parish Litter Pick at 10.00 am on Saturday 18th October. Sign up in advance by emailing the clerk (contact details on p.1) and find full details on our [website](#).

RECREATION GROUND & COX'S POND

There will be extensive works over the summer to remove dead wood and ivy from the trees on the village green to make the area safe in the high winds of the autumn and winter. Two cherry trees on the northern boundary - one dead and one with less than 10% live growth - are to be felled.



A lot of work has been carried out at Cox's Pond over the last 6 months, clearing the banks and restoring the jetty.

Over the summer, there will be further work to some of the trees surrounding the pond, with one possible felling on the southern border.

PAPER COPIES OF THIS NEWSLETTER

Do you know someone who would like a paper copy of this newsletter? Perhaps a neighbour who doesn't have access to the internet? Paper copies are available on request from the Clerk (contact details on p1).

SUMMER QUIZ

Hello! Cllr. Doug Brown here again with another of my 'frame builder' quizzes, which you should be familiar with from previous news-letters. Scoring is based around a game of snooker, with red ball



questions and coloured ball questions. The red ball questions are designed to be relatively easy (although I fully appreciate that the term 'easy' depends on whether you know the answer!) The coloured ball questions carry increasing values starting at 2 points for the yellow ball question, rising to 7 points for the black ball question. As you'd expect, the degree of difficulty of the questions (in my humble opinion) gets greater as you progress through the coloured ball questions but there's another catch: in order to score the points on the coloured ball questions you must get the immediate preceding red ball question correct or, to put it in 'snooker parlance', you must 'pot a red ball' before you 'pot a coloured ball'. The maximum score you can achieve if you 'clear the table' is 33 points; however, if you get, say, the third red ball question wrong you can't claim the 4 points for the brown ball question even if you get it right. But that doesn't mean an end to your frame building. If you get every other question correct apart from the third red ball question then your score will be: $1+2+1+3+0+0+1+5+1+6+1+7 = 28$ points.

You can find other quizzes - and the answers to this one - on the [Quiz](#) tab of the Parish Council website. (This quiz is the 'Summer 2025 Newsletter' quiz.)

PAVILION RENOVATED

The renovation of the cricket pavilion took place in June, which has smartened up the building and removed unsightly graffiti. Graffiti was also present on some of the play equipment, sadly.



1. Red ball question (all red ball questions carry 1 point): Which famous 'Boys own' story hero was created by Captain W E Johns?
2. Yellow ball question (2 points): In which country is Bizet's opera Carmen set?
3. Red ball question: In which Southern Hemisphere country is Cook Mountain?
4. Green ball question (3 points): Australian snubfin, Amazon river, bottlenose and hourglass are all types of which mammal?
5. Red ball question: What name is given to an, often, silver tray on which something is presented?
6. Brown ball question (4 points): The head, the abdomen and what else make up the segments of an insect's body?
7. Red ball question: Which book and later film featured Homily, Pod and Arietty?
8. Blue ball question (5 points): In which Shakespeare play does the character Cordelia feature?
9. Red ball question: In the late 1970s/early 1980s, which TV character, portrayed by Robert Lindsay, supported Fulham football club and worked tirelessly for the independence of Tooting?
10. Pink ball question (6 points): In early 2011 which town in Wiltshire, situated close to RAF Lyneham, had the title 'Royal' bestowed upon it, the first new royal charter for over 100 years?
11. Red ball question: Which city in America was originally called New Amsterdam?
12. Black ball question (7 points): Which film star, famed for his one-liners, once said 'I'm free of all prejudices, I hate everyone equally'? (clue - think 'al fresco toilet')

PERMISSION REFUSED FOR PLAISTOW DEVELOPMENT

A planning application to build 15 houses on the field overlooking Plaistow Village Green has been refused by Chichester District Council on several grounds, including that it "would result in harm to the character of the area" and "harm the setting of the Plaistow Conservation Area", as well as concerns around wildlife and drainage. Your Parish Council, which objected to the application, welcomes the decision.

